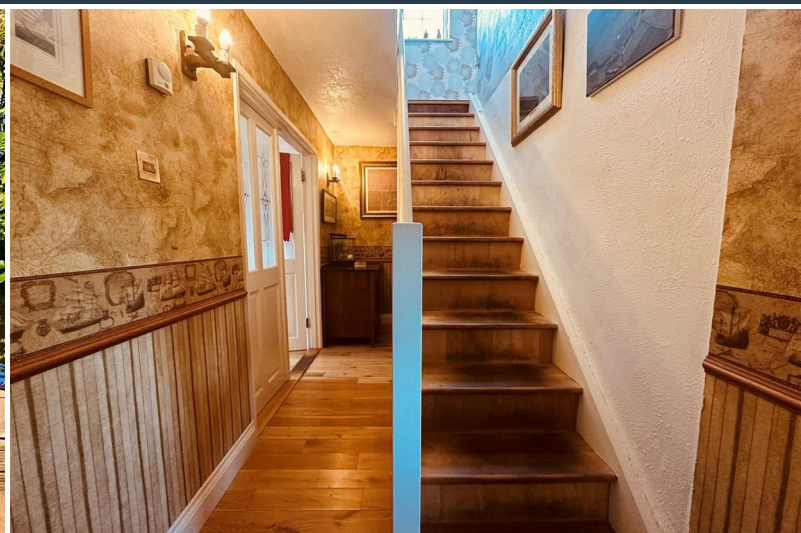




, St. Brelade, JE3 8GW  
Asking price £975,000



# St. Brelade, JE3 8GW



Finders Keepers Estates are thrilled to offer this four-bedroom family home in the heart of St Brelade. Located within the popular development of Don Farm you are close to all amenities such as the new Les Quennavais School, and located in a great catchment area. Enjoy the beautiful scenery of St Brelades Bay and all the other attractions there Only a short drive, walk bus or cycle away Ticking all the boxes, this property is not to be missed. You can relax in the Serene and tranquil Sunny Garden with plenty of privacy or enjoy your morning coffee in the master bedrooms sun room while taking in the view. Another benefit of this home is the back private access to the Les Quennevais Sports fields/walk. This would truly make the perfect family home and plenty of opportunity to put your own individual taste on it

- Front and rear Gardens
- Four bedrooms
- Two Bathrooms
- Kitchen with front garden access
- Ample storage
- Parking up to five vehicles and Visitor parking
- Master bedroom with south facing conservatory
- Separate living room with rear garden access
- Spacious Sunny garden with access to the Les Quennavais playing fields
- Property immediately available to move into











These particulars, whilst believed to be accurate are set out as a general outline only for guidance and do not constitute any part of an offer or contract. Intending purchasers should not rely on them as statements of representation of fact, but must satisfy themselves by inspection or otherwise as to their accuracy. No person in this firm's employment has the authority to make or give any representation or warranty in respect of the property.