



Flat 5, 8 Springfield Crescent Trinity Road, St. Helier, JE2 4GL
Asking price £355,000

 2  1  1

Flat 5, 8 Springfield Crescent Trinity Road St. Helier, JE2 4GL



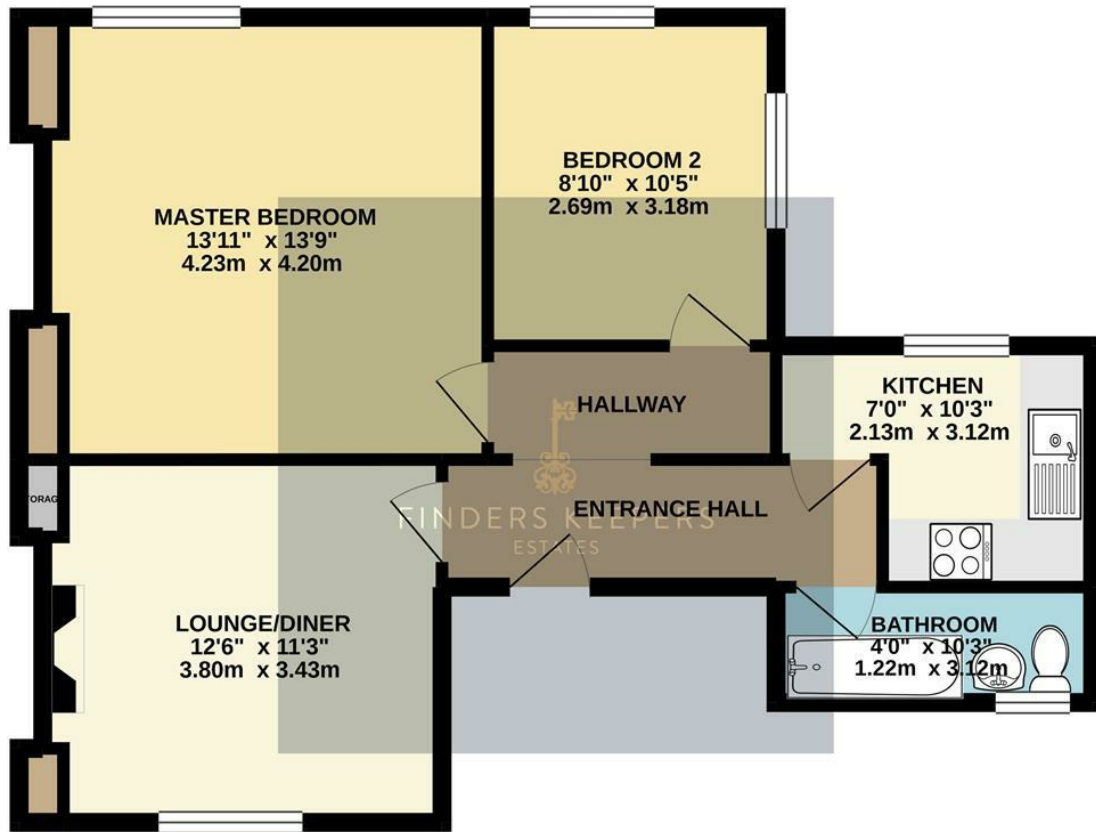
Finders Keepers Estates are proud to present this large and immaculate Victorian apartment to the market. The property benefits from high ceilings, large sash windows and a Victorian feature fireplace. Comprising of two great size double bedrooms, pristine bathroom, bright lounge/diner, fully fitted kitchen with breakfast bar, plenty of storage and one allocated off-road parking space. The apartment is within close proximity to schools, shops, town and other amenities. It would make an ideal investment opportunity as it can be purchased by way of Share Transfer.

- Large Victorian Apartment
- One Bathroom
- Modern Kitchen
- Two Double Bedrooms
- One Off-Road Parking Space
- Separate Lounge / Diner

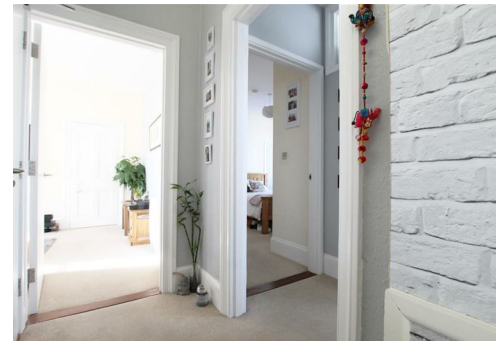
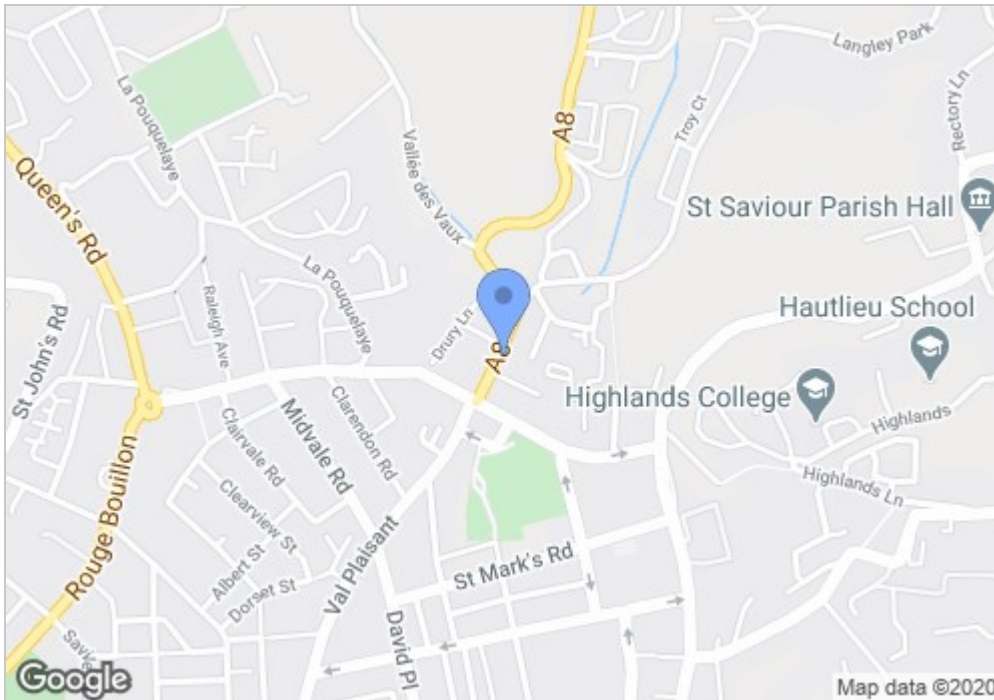




GROUND FLOOR
613 sq.ft. (56.9 sq.m.) approx.



TOTAL FLOOR AREA : 613 sq.ft. (56.9 sq.m.) approx.
Whilst every attempt has been made to ensure the accuracy of the floorplan contained here, measurements of doors, windows, rooms and any other items are approximate and no responsibility is taken for any error, omission or mis-statement. This plan is for illustrative purposes only and should be used as such by any prospective purchaser. The services, systems and appliances shown have not been tested and no guarantee as to their operability or efficiency can be given.
Made with Metropix ©2020



These particulars, whilst believed to be accurate are set out as a general outline only for guidance and do not constitute any part of an offer or contract. Intending purchasers should not rely on them as statements of representation of fact, but must satisfy themselves by inspection or otherwise as to their accuracy. No person in this firm's employment has the authority to make or give any representation or warranty in respect of the property.